

## Community Consultation – December 2020

### Feedback Report

At this point in the design process it is necessary to make some decisions on the frontage of the George, and to take these decisions forward it is necessary to consult, and engage, with the community.

Consequently, a questionnaire was devised for distribution to the whole village. As it was December a Christmas card was designed, with the questionnaire tucked inside, and hand delivered to each of the 1185 households in the village.

To maximize ease of return, and following previous successful practice, the card and questionnaire were delivered in a self-seal plastic envelope to each house. On completion of the questionnaire, it was to be replaced in the plastic envelope and placed on doorsteps for collection by the volunteers who delivered them. Additionally, a drop-off box was provided in a community shop in a central location in the village.

Each questionnaire had spaces for two respondents and in this way there were 466 replies which represents about 26% of the adult population of the village.

We would like to thank all those who took the time to consider the questions, give their considered replies and show again their very positive support to the project and restoration of the pub. This is an early report to feedback the numeric responses and present all of the comments made against the questions without edit.

Review and consideration of all the comments will take some time and a further report will be made on its completion to show the outcome.

Particular summary responses are:

#### Colour preferences:

Warm grey:	98
Sage Green:	186
Suffolk Pink:	178
No preference:	4

#### Garden at front:

In favour:	402
Not in favour:	8
Neither:	56

Comments and suggestions were added by 97 people and they are shown below.

## Community Consultation – December 2020

### Bike Friendly

In favour:	422
Not in favour:	7
Neither:	37

### Pizza oven:

In favour:	400
Not in favour:	12
Neither:	54

In response to **What else would you like to see happen to your pub?** Comments were received from 155 people and they are all shown below.

Inclusion in a prize draw was offered to all responders and there were 146 contact details provided for inclusion in the draw.

All 146 responders who included contact details on the return questionnaire were entered into a draw for a seasonal hamper. The winner has been drawn but due to Coronavirus the presentation will be made at Easter.

The George Management Committee

## Community Consultation – December 2020

### Comments Returned

All individual comments are reproduced here as they are written. In some instances the handwriting is not legible and has been replaced with question marks.

### **Would you like to make a suggestion about the front garden area?**

5	Alternative to box, re box blight
	Must have an elegant railing
14	Maybe somewhere to sit in the summer
27	Benches for people to sit out with a drink and watch the world go by – good for socially isolated older people
29	Bird and bee friendly flowers
48	Paved vehicle access for deliveries, dropping off the old/disabled, taxi pick up etc
50	Summer bedding pots
55	I think you got it right
56	Seating in the front garden but where do the bikes go?
71	Wisteria along the front face of the building
	No taxi pickups/drop offs
75	Tables and chairs
	Tables and chairs
76	Some outside seating
85	A small number of large planters
	A small number of large planters
104	Wisteria or climbing rose
110	Uplighting, bay trees and perennial planting
121	Bad idea. It will be a magnet for litter and leaves. There could be a good reason the pub didn't have this before. Better to pave it and have tubs and planters. You would have to have access to the doors anyway
141	Lots if spring bulbs, roses, lemon scented Monterey, express goldcrest, pansies, leucothoe zeblid - evergreen.
157	Bee friendly plants
170	Hanging baskets, nice lighting
181	Box hedging would be damaged by spray from passing vehicles
182	Hanging baskets
	Hanging baskets
225	Sounds good!
211	Security cameras
	No bikes (area at back)
251	Just a paved area
253	Is it the area to chain bikes up or is that at the back?
261	Too close to road
268	There, or elsewhere in garden, some non-obstructing planning boxes/tubs, where school children may grow/tend herbs (and maybe other veg., fruits etc)
303	An area to charge electric bikes would be good while having a drink

12 January 2021

## Community Consultation – December 2020

316	Small tables – slats for cyclists or walkers/ramblers’ muddy boots outside
319	Tables outside for summer o/s drinking
321	Gravel and pots. Hanging baskets
321	Gravel and pots. Hanging baskets
350	Low level lighting under hedge and lights on name
354	Possible issue of this turning into a dog loo. A raised bed option might be easier to maintain
355	I see it as a nice extra, not a necessity
375	Any area for outside seating
382	Don’t like it. Very vulnerable to misuse. You would need fag end receptacle. Not enough space
383	Prefer to see area paved. Dwarf trees.
384	It will need to be kept tidy
385	Make room for a couple of tables/benches Rustic style benches alongside front
399	The planting to be such that it benefits
407	Hanging baskets or troughs of flowers done by community volunteers
443	Plants/shrubs that provide year round interest – not having to be constantly replaced with the season – AND BEE Friendly
450	Keep planting flexible (e.g., pots) so that space can be used for extra seating etc if required.
478	A raised traffic slowing scheme on the road outside
479	Additional flowers in widow boxes
485	LED lighting that suits the location of the pub
486	Community input for upkeep and maintenance
505	Just hedge and evergreen – flowers need looking after
523	Parking for disabled and cyclists
536	Garden a nice idea with brick wall/railings – not a box hedge
541	No pond. Danger for little toddlers and children
559	Fairy lights Herb garden for Fragrance
609	Seasonal change in colour
617	Please not to make it a default smoking area – so non-smokers can also enjoy it
622	Alfresco dining
663	Prefer original design, to be able to walk straight in from pavement, could look cramped with garden
687	Wheelchair areas Tables (bench)
703	Keep it simple
705	Flowering bushes, opposed to flowers
709	Keep it simple, maybe tables and chairs
719	Being able to sit out in the garden
731	Some seating – bistro style small tables Some seasonal planting please
743	Wisteria on front of house
748	Lighting to go with landscaping Foliage and lots of it

12 January 2021

## Community Consultation – December 2020

753	Box has a virus – go for yew instead – slow growing and easier to maintain
787	Hedge and any planting should be wildlife friendly
805	A small lawn and border
815	Roses would also be nice
831	Hanging baskets
837	As long as it is kept well
839	4/5 standard bay tress
	Symmetrical design
856	Just so it looks colourful and pretty
857	Seating
916	Hanging baskets
	Outside garden furnishings/sofas seating similar to Aurora Ipswich
946	Nice lighting when lit
951	Seating
	Seating
967	Seating area
	Seating area
987	Ensure smoking does not annoy smokers (if applicable)
990	Very inviting and friendly idea
1003	Provision for some seating
1007	Hedgehog house and water bowl
	Bee friendly flowers/wild flowers
1009	Somehow above seems too cottagey
1017	Pave instead – table and chairs
	No low railings, not to have a garden, not appropriate in this location. Have window boxes. Upkeep likely to be a problem for formal garden area. Likely to need bollards to stop traffic mounting pavement
1125	Herbs, fruit trees for everyone to make use of?
1020	Pave with potted plants/bushes
1027	It might be nice to put up some hanging baskets
1039	Bright and colourful
1042	Will there be room for a few tables?
	Something to stop people parking
1070	Lots of colour
1072	No railings. Leave space for tables and chairs in summer.
1082	Add hanging baskets
1084	Maybe consider an alternative to box – it's a bit samey + disease prone. Euonymus is lovely.
1087	Try to discourage smokers congregating on the pavement.
	Discourage littering
1090	Stylish, gentle uplights around entrance.
1106	I think the front should be left for bikes, horses, Drays, the disabled ambulance and for god forbid fire engines
1109	Please plant a couple of small tables
1145	Keep simple – pavers similar to Kings Head for picnic tables. Tubs – but not priority

12 January 2021

## Community Consultation – December 2020

### What else would you like to see happen at your pub

05	Pizza oven a good idea – cookery – need to work with the school and probably have ????? Not sure about classes for local school children – perhaps basic cooking classes for adults with ideas for effective budgeting and making money “stretch”
06	Light lunches for those with small appetites
07	It has a small room for committee meetings, etc.
08	Locally sourced menu Community events Child/dog friendly A dart board
09	Community facilities
14	A barbecue area Quiz night Music evening
18	Adult classes
19	Would prefer emphasis to be pub first and restaurant second – so bigger bar
25	Forward planning regarding parking arrangements for customers of the pub
27	Sports TV and pool table / darts board. Set menu / themed nights. Loyalty / discount card to encourage locals regularly.
29	Quality food that will attract customers Somewhere for walkers and dog walkers
48	Easy clean floor in one bar area but sound-absorbing in dining area. So many pubs are too noisy.
50	Open fire or wood-burner (no pun!) Microbrewery eventually.
55	I would like to see the George open age 91!!
56	The front should have the main entrance – invite people in No balcony for neighbour’s privacy
66	The whole ridiculous plan should be shelved A complete waste of money
71	TV / projector for sporting events More welcoming for women
73	A separate bar and garden
85	Menu – classic food Quiet seating area, WiFi + charging points
98	Facilities for old fashioned board games
100	Nice beer garden at rear Dog friendly
104	Coffees in the daytime – a place to meet friends
105	Music evenings e.g., acoustic open mike nights
110	Quiz nights
121	It is a waste of money which would be better spent on the village hall. Knock it down and build a couple of houses for older folk. The village has not had a pub for 7 years and it hasn’t been missed. We have several other good pubs close by. Greyhound is only a short walk away
130	Not just food.

12 January 2021

## Community Consultation – December 2020

	It would be nice to have a strong social scene, quiz nights, themed nights, pub sports, e.g., darts or dominoes
133	Please make the pub “disabled friendly” and accessible to all particularly those in wheel chairs
134	You’re all doing a fantastic job. Many thanks and Happy Christmas
141	Wine tasting once a month Traditional pub food Varied music – live nights Pub Quiz Trained staff Food tasting once a month Participation in local events
168	Lovely meals what we used to have at the George Beautiful on Christmas Day pensioners dinners on Thursdays The previous landlord was really a good cook plenty to eat
170	Something for the elderly Bingo Quiz night Sing along night
181	Press ES Council to cancel parking charges on the Hill to encourage folk back into the village centre – AND encourage people to wander down to the George. Win win !!
182	Seating in back garden if possible A small changing menu
184	Speciality nights e.g., French, Italian, Greek
185	Hopefully, it will be a pub for locals to have an evening/weekend drink first and foremost. Whilst food makes money, an exclusive bistro is off-putting for lots of Wickham Market residents.
211	It would be good to ensure that any cyclists visiting put their bikes around the back and not all lent against the wall at the front
225	A weekly quiz night – the guy who runs the Thursday night quiz at the Cherry tree in Woodbridge is amazing! His name is Simon
231	An outdoor eating area
232	Just can’t wait for it to be open
252	Log burner please
253	Place to sell allotment produce and honey
268	Any chance of using/bottling/selling spring water from Wickham itself? (Many local springs: one of the five formerly known on the Hill used to be famous for its soft water)
303	Family social events Opening in day for parents/toddler/baby to get a coffee
321	Log fires Good pub food
322	A comfortable atmosphere for single customers
324	Quizzes Themed evenings
334	Outside seating at rear of pub

## Community Consultation – December 2020

	Try to retain an open fire for winter
337	As I am ninety one I will leave it to the younger people to make their decisions
350	Cookery classes for adults too Other classes languages/hobbies
354	Activities that bring people together i.e., darts etc. Themed evenings i.e., murder mystery, Chinese night
355	Adult cookery classes – small group cooking then eating together like a cookery school Coffee mornings Quiz nights
375	Comfy casual seating as well as more restaurant style table and chairs Outside seating area for summer if possible
376	Different/guest beers from new/local breweries Board games available Wines from local vineyards Good outside area for the summer Mini beer festivals for local producers
382	Drop in coffee bar for weary shoppers Must be dog friendly
383	To establish and open as soon as possible
395	It all sounds good The George was the hub of the village and the sooner things start moving the best for all concerned
403	A woodburner stove inside for a cosy ambience on cool evenings Live music
406	Live music Board games
412	Proper dinners with vegetables from the Saturday market and the Co-op
443	Food to restaurant quality like Greyhound and Ufford Crown Las Vegas style casino (I know this is a long shot)
450	Regular pub quiz Low key live music – acoustic folk, rock, etc
453	Sandwich delivery service and pizza A barista coffee machine Pun quizzes On table beer taps
476	Dog friendly
477	Darts team Quiz evening
478	Space or a morning for those villagers who are on their own i.e., “meet up Mondays” Quizzes Knit and natter group Internet and co-working spaces
479	Make sure that it is dog friendly Open fire in the winter
484	I would be against a pizza oven due to the potential for odour nuisance to neighbours. Cooking classes are a good idea though
485	Outside BBQ/grill for summer community events or special food events
505	An uncluttered bar (no stools) comfortable seating

12 January 2021



## Community Consultation – December 2020

	No music 18+ only
510	Thank you're ideas are great
511	Disabled parking places
520	Just like to see it up and running again
523	Parking for disabled and cyclists
525	Local real ale and cider events/festival we really like the idea of the authentic wood fired pizza oven a lot of adults would probably love to attend cookery classes too
532	Would be good to have a dog friendly area Keep the pub s traditional as possible
536	Parking
541	Good big arm chairs A nice big fire place with a big fire going A good menu of classic good food or a vegetable menu for people who don't eat meat A few benches to sit on
559	Community events e.g., coffee mornings, OAP events
564	OAP meals
584	I like the Ethos of Community use So, links with primary school, existing and potential new clubs/groups
586	A move on
590	Make it dog friendly too Many thanks for a lovely card and for your hard work
591	A community friendly room capacity 25 max to complement the refurbished village hall. ¾ meal day/evenings per week for sustainability
596	Regular folk music evenings Dog friendly area Food theme evenings for charity
617	Just having a welcoming inclusive pub would be wonderful especially if it could celebrate Suffolk producers and suppliers
618	An affordable pub!! No gastro-food needs to suit all pockets
622	Good dining, real ale
647	We would like to have regular live music Bingo night
663	Family friendly all the way, possibly hold clubs for the elderly at lunch times
668	Where would you put cycles safely
685	Reduced meals for pensioners
687	A room to be set aside for small parties or meetings or local clubs fair priced local foods
690	As we are an elderly couple, we would like to be able to have a nice Sunday lunch and a drink not too far from home.
693	A beer garden with child's play area at the rear to keep children away from the road
703	Good beer and food Place for ladies to lunch
705	Good wholesome food
709	Entertainment occasionally, music, etc Good food

12 January 2021

## Community Consultation – December 2020

731	Quiz nights, themed meal nights, pool table A dedicated outside area for smokers rather than just anywhere outside
736	Theme nights, e.g., French cuisine, American Independence Day
747	Perhaps some old-style pub games
748	Areas for local groups to meet up – encouraging groups such as camera club, writing club, etc. Small children play area for summer Live music – bands – open mic night Celebrating events like VE Day, Royal Weddings, football, etc.
753	Live music at weekends essential Monthly quiz night A meeting space Lunches and suppers served daily Teas and coffees served when our cafes are closed
771	Good reasonably priced food
787	Would these be the same cyclists that don't stop at the zebra crossing on the Hill? Or the ones that ride in a phalanx around the back roads holding up traffic? Please keep any menus "local", friendly and proper pub food (quinoa? Really?)
795	Open mic nights / live acoustic music Quiz nights To be fully accessible Sofas
805	Dog friendly
812	You say there are 119 community pubs open now. How many of them had to be built after being burnt to the ground? Also, you say you would like the pub being a cyclist friendly one, that will take business away from Café 46
813	Dog friendly if possible, even if it's only in certain areas.
815	Craft beer
831	Food themed days Dog friendly Fully accessible Pub quiz nights
833	Open as soon as possible
839	Sunday lunches Themed nights throughout the year (works at Sorrel Horse, Shottisham) Afternoon events for seniors Change of name, the George had a bad reputation
856	I would be more than happy just to get rid of that terrible eyesore
902	Saturday market with more local
916	Retro board games or allow people to bring theirs in Pie and mash night, steak nights, retro jukebox To display rugby and football world cups, Wimbledon (prosecco and strawberries) Pub quiz in child friendly times and adult times Outside heating/ outside area, outside log burner and inside Cakes to come from local cafes (Cafe 46) Vida House? Work with local restaurants in the town to do curry and pint, fish and chip nights, Chinese, etc
920	Music entertainment and karaoke
939	Dog friendly garden

12 January 2021

## Community Consultation – December 2020

946	Pub cat Use the allotment for food
967	Outside BBQ
987	Offer cookery classes for all ages
990	Good selection of local ales
993	Don't forget to include a cycle park area/facility
1001	An area which is for walkers and dogs where a little mud wouldn't be a problem
1007	Insect houses Cocktail nights – able to rent out for parties Locally sourced ingredients with veggie and vegan options
1009	A good selection of beers A welcoming environment, affable, community minded licensee/landlord/mine host, prepared for hard work, sociable (not overly) and food wise not over stretched
1013	Possibility of outdoor seating at rear Petanque Piste to bring local business to the Pub
1015	I think that my original survey for what happens still stands
1017	The original signs under plaster and paint "Cobbold" can just be seen. May I suggest that this is recorded when any restoration work is carried out to the building, it is part of the George's story.
1020	Quiz evenings Crib sessions Live music sessions
1027	Perhaps a small beer festival eventually maybe get CAMRA involved
1028	Dog friendly
1033	Traditional pub food served – not gastro food
1037	Coffee mornings Afternoon teas Music evenings
1039	Karaoke and/or live music nights Quiz nights
1042	Occasional folk music?
1062	Open mike nights
1068	Really good coffee and breakfast (English and continental)
1070	Am not too bothered about the pizza oven it risks being a restaurant rather than a pub. I like the usual fare – small clubs (e.g., darts, quizzes, knitting) NO TV
1078	Home cooked food B&B
1079	Weekly live music event
1082	Organise motorcycle show/event in the town and link it with the pub (I would be happy to help)
1083	Gluten free meals and gluten free beer would be nice.
1084	Good beer Music (local musicians)
1090	Pub sing nights, English, Irish folk evenings – old piano in bar area Sofa area Cosier evenings e.g., candles Local craft beer as choice – help local business and cheaper beer

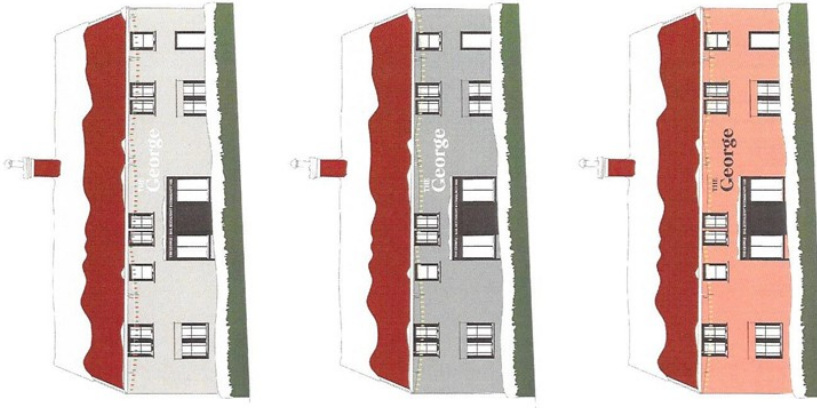
12 January 2021

## Community Consultation – December 2020

1103	Live folk music WiFi Noticeboard
1105	Themed evenings
1109	Outside eating facilities at rear
1121	Pub meals
1123	Quiz nights Parent groups/classes
1125	Live music nights
1141	Live musician Good food
1145	I have already completed 2 on-line questionnaires. Please send out the results Pub, meals, snack, coffee, WiFi, small meeting rooms – 2 perhaps Front door
1147	Separate drinking and dining areas
1149	I can't say yes or no to front garden because the path is narrow if you are pushing a buggy
1150	Live musician Quizzes

# Community Consultation – December 2020

## Christmas card



Supported by you and



Thank you to Lottery players everywhere  
for supporting our project



## Community Consultation – December 2020

Merry Christmas to you  
and your family and our  
best wishes for a healthy  
and happy new year.

From The George Team



Questionnaire

12 January 2021

# Community Consultation – December 2020

## Did you know?

We have commissioned over a dozen professional companies to prepare for the restoration and building works of The George

There have been over 6000 committee volunteer hours applied to the project so far.

We have over 320 shareholders and it is growing all the time.

The first Community Pub opened in 1983, there are now 119 with more coming, not one has failed, a 100% success rate.

In Heritage terms the building is of significant importance to Wickham Market and Suffolk. Its origins are late medieval and it is on the Suffolk Heritage buildings at risk list.

The George is reckoned to be over 500 years old and could well have been built as an Inn at its current location midway between London and Yarmouth. It has been a pub for hundreds of years and always will be.

In estate agents language they refer to the five P's of a thriving village: Pub, Post Office, Parish Church, Primary School and Public Transport

Pubs and post offices are the first point of call for newcomers wanting information.

On a recent poll of 10,000 adults over 50% agree that the village pub is the most sought after community feature.

£100,000 a year is the typical amount a pub adds to the local economy.



## Dear Neighbour, Shareholder, Friend

If anyone doubted how important a village pub is, then a recent UK wide survey\* concluded that it is: **"the single most important feature of a village"**

Wickham Market is a quintessential English village, we have almost everything we need and with more families moving in and more people working from home, the services to the community that the George will offer will complete the fabric of the Village.

Tom Kerridge's BBC series "Saving Britain's Pubs" says the same thing and praises the community value they bring.

The George will be far more than a family friendly pub and restaurant, it will bring people of all ages together, be an antidote to isolation, it will boost the local economy and provide jobs.

It will not be the place it was before. It will be a community owned and will be professionally managed, it will be a special pub, it's our pub, and all in the setting of a heritage building that will be beautifully restored and preserved for the benefit of generations to come.

## Thank you for your support!

We have incredible support from the National Lottery Heritage Fund and many other organisations (see the reverse of your card) but it is your continued support that matters the most.

Please help us by answering a few survey questions and you will be entered into a draw to **win a fabulous George Hamper!**

\*the most important feature of a village survey can be found here:  
[www.jackson-stops.co.uk/articles/nation-names-the-village-pub-as-heart-of-the-community](http://www.jackson-stops.co.uk/articles/nation-names-the-village-pub-as-heart-of-the-community)

# Community Consultation – December 2020

1122

It would have been a wonderful 2020 without a pandemic and if only we could have celebrated Christmas in the George. Well in 2023 we will be able to celebrate all our events in the George and we are working hard to achieve that. To help us get there, we would like your opinion on how the George will look when it is restored. Here are 3 illustrations showing different colours for the frontage, please tick which one you prefer. (There are two boxes for two members of your household)

**1 Warm Grey**



Person 1  Person 2

**2 Sage Green**



Person 1  Person 2

**3 Suffolk Pink**



Person 1  Person 2

## The front garden

We are proposing a professionally designed front garden with a box hedge border and low railings extending out to where the hoarding currently is, this is something the old George never had. It will create a wonderful, colourful, flower filled frontage.

Tick the box if you like that scheme

Person 1  Person 2   
Yes

Would you like to make a suggestion about the front garden area?

Person 1

Person 2

Other things we are considering include:  
making the George 'bike friendly' so all you enthusiastic cyclists will be able to stop, safely with your bike, for refreshments.

Person 1  Person 2   
Yes

An authentic wood fired pizza oven and offering cookery classes for local schoolchildren.

Person 1  Person 2   
Yes

What else would you like to see happen at your pub?

---



---



---

## Getting this form back to us.

Please put this form back into the plastic bag it came in and leave on your doorstep on Sunday evening (under a stone so it doesn't blow away) We will pass by on the morning of Monday 21st to collect it. Alternatively, you can drop it into a box at Inspirations shop on the Hill. Thank you for taking part.